

# **SUPERCOMBINATA**<sup>®</sup>

THE UNIQUE COMBO ONE

**SUPERCOMBINATA**  
Elsa [www.elsa.com](http://www.elsa.com) Portable Line Bor



**BE\_XTRA**



**A UNIQUE AND  
EXTRAORDINARY  
PRODUCT**

**RELIABLE  
SUSTAINABLE  
SIMPLE  
POWERFUL**

**LINE BORING | OVERLAY WELDING | FACING  
THREADING | EXTERNAL TURNING | DRILLING | TAPPING**

# **SUPERCOMBINATA®**

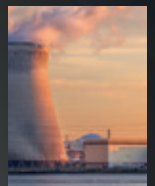
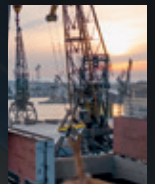
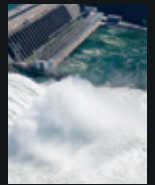
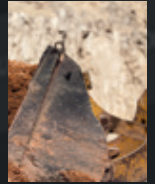
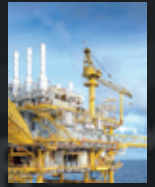
THE UNIQUE COMBO ONE

The SUPERCOMBINATA series offers customers the possibility of bringing machining directly to the place where it is needed, thus improving efficiency and convenience. This concept overturns the traditional way of approaching industrial challenges and represents innovation at its best.

It is designed to meet the increasingly demanding requirements in the field of maintenance and repair.

Thanks to its small size and extreme versatility and precision, it can perform machining operations directly on site, reducing the time and costs of a traditional repair. Supercombinata portable line borers allow on-site operations, thus reducing downtime and transport costs. They have been successfully used for many years in many different industrial sectors

**EARTHMOVING, SHIPYARDS,  
HYDROPOWER, RAILWAY,  
WINDPOWER, NUCLEAR  
INDUSTRY, OFFSHORE**



# BE\_XTRA

CHOOSE THE ONLY EXTRAFACTORY SOLUTION

Elsa is a company with over 25 years of experience in the development and marketing of multifunctional portable machine tools. Throughout this time, the company has become an industry leader and earned a global reputation for quality and reliability.

Elsa S.r.l. is recognised worldwide as a synonym for excellence and innovation in the field of portable metalworking machine tools.



**WE OFFER INNOVATIVE PRODUCTS, MADE IN ITALY, ALWAYS AT THE FOREFRONT OF QUALITY AND RELIABILITY**

Elsa has transformed the concept of 'out of the factory' or 'ex factory' into a concrete reality. The company has paved the way for machining operations such as line boring and welding directly on site, beyond the limitations of traditional in-house machining operations.





SUPERCOMBINATA®

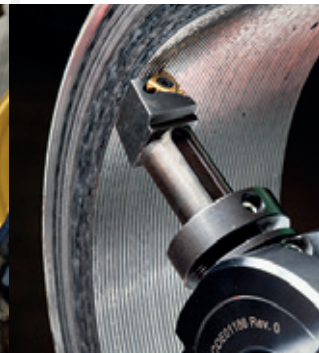
# BASIC



LINE BORING AND OVERLAY WELDING, FLANGE FACING AND CREATION OF SEATS FOR SEEGER RINGS, EXTERNAL TURNING

## BASIC

Line boring:  $\varnothing$  22 - 120 mm  
Internal welding: Extra kit  
Boring bar diameter:  $\varnothing$  20 x 1800 mm /  $\varnothing$  40 x 1500 mm  
Rotation motor: 1800 W with 2-speed geared motor  
Output torque at the bar: 290 Nm with 120 rpm  
Longitudinal stroke unlimited with 350 mm step  
Voltage: 230 V (50 Hz) or 110 V (50 Hz)  
Main unit: 36 kg



# EASY



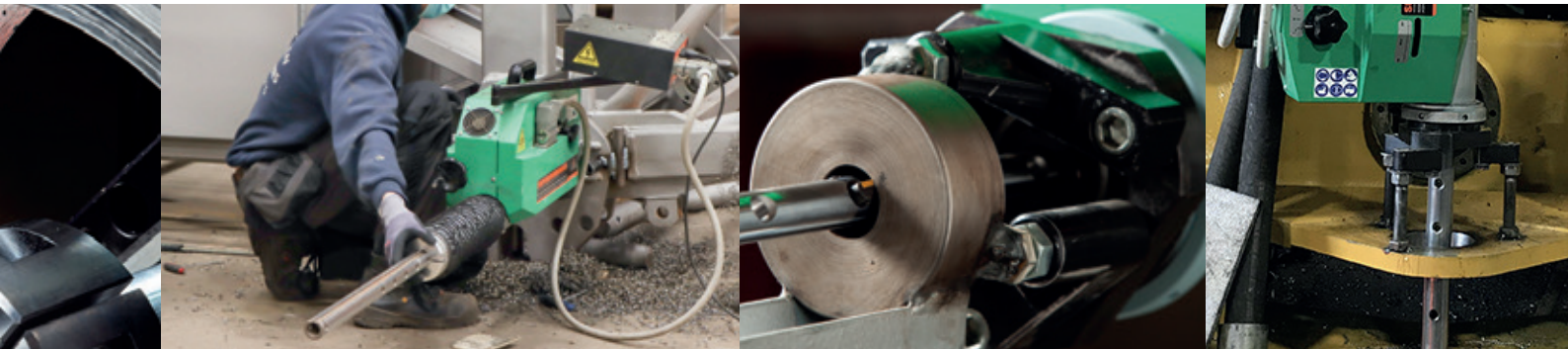
LINE BORING AND OVERLAY WELDING, FLANGE FACING AND CREATION OF SEATS FOR SEEGER RINGS, EXTERNAL TURNING

## EASY

Line boring:  $\varnothing$  22 - 250 mm  
 Internal welding:  $\varnothing$  42 - 250 mm  
 Boring bar diameter:  $\varnothing$  40 x 2200 mm  
 Rotation motor: 1800 W with 2-speed geared motor  
 Output torque at the bar: 290 Nm with 120 rpm  
 Longitudinal stroke unlimited with 350 mm step  
 Voltage: 230 V (50 Hz) or 110 V (50 Hz)  
 Main unit: 36 kg

## EASY COMPACT

Line boring:  $\varnothing$  42 - 250 mm  
 Internal welding:  $\varnothing$  42 - 250 mm  
 Boring bar diameter:  $\varnothing$  40 mm x 2200 mm  
 Rotation motor: 1800 W with 2-speed geared motor  
 Output torque at the bar: 290 Nm with 120 rpm  
 Longitudinal stroke unlimited with 250 mm step  
 Voltage: 230 V (50 Hz) or 110 V (50 Hz)  
 Main unit: 34 kg







SUPERCOMBINATA®

**SC**  
**SC**

LINE BORING AND OVERLAY WELDING, FLANGE FACING AND CREATION OF SEATS FOR SEEGER RINGS, EXTERNAL TURNING

## SC1 | SC1 DIGITAL

Line boring: Ø 42 - 400 mm  
 Internal welding: Ø 42 - 400 mm  
 Boring bar diameter: Ø 40 x 2200 mm  
 Rotation motor: 1800 W with 4-speed geared motor  
 Output torque at the bar: Up to 400 Nm with 95 rpm  
 Longitudinal stroke unlimited with 350 mm step  
 Voltage: 230 V (50 Hz) or 110 V (50 Hz)  
 Main unit: 36 kg

## SC2 | SC2 DIGITAL

Line boring: Ø 62 - 600 mm  
 Internal welding: Ø 42 - 600 mm  
 Boring bar diameter: Ø 60 x 2200 mm  
 Rotation motor: 1800 W with 4-speed geared motor  
 Output torque at the bar: Up to 520 Nm with 65 rpm  
 Longitudinal stroke unlimited with 350 mm step  
 Voltage: 230 V (50 Hz) or 110 V (50 Hz)  
 Main unit: 36 kg

## SC2 COMPACT

Line boring: Ø 62 - 250 mm  
 Internal welding: Ø 42 - 250 mm  
 Boring bar diameter: Ø 60 x 2200 mm  
 Rotation motor: 1800 W with 2-speed geared motor  
 Output torque at the bar: 350 Nm with 100 rpm  
 Longitudinal stroke unlimited with 250 mm step  
 Voltage: 230 V (50 Hz) or 110 V (50 Hz)  
 Main unit: 34 kg

## SC3 | SC3 DIGITAL

Line boring: Ø 62 - 800 mm  
 Internal welding: Ø 42 - 800 mm  
 Boring bar diameter: Ø 60 x 2200 mm  
 Rotation motor: 2300 W with 4-speed geared motor  
 Output torque at the bar: 902 Nm with 55 rpm  
 Longitudinal stroke unlimited with 350 mm step  
 Voltage: 230 V (50 Hz) or 110 V (50 Hz)  
 Main unit: 39 kg



# EXTRA KITS

---

## BORING REDUCTION

EASY | EASY COMPACT | SC1  
SC2 | SC2 COMPACT | SC3

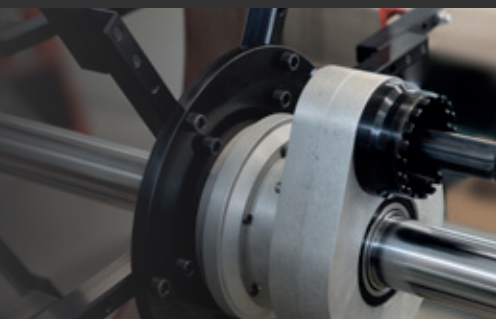
The reduction kit has been designed to give great versatility of use to the portable line boring machines of the Supercombinata series. With the addition of Ø 20, 30 or 40 mm boring shafts, the standard working range can be reduced to perform line boring jobs from min. Ø 22 mm.



## BIG DIAMETERS

SC1 | SC2 | SC3

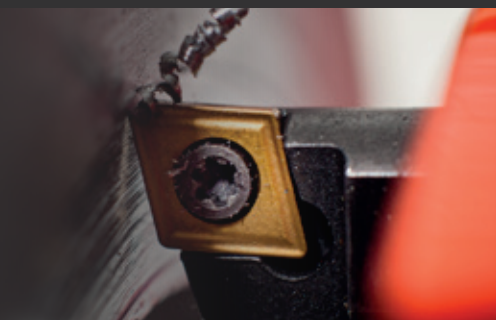
The kit has been designed to extend the standard machining range of the portable line boring machine Supercombinata, allowing internal line boring and overlay welding from Ø 400 mm to Ø 1200 mm.



## FACING

BASIC | EASY COMPACT  
SC1 | SC2  
SC2 COMPACT | SC3

The kit has been designed to give great versatility of use to the portable boring machines of the Supercombinata series. It consists in a facing head allowing flange facing and the creation of seats for seeger circlips and o-rings, by using standard cutting inserts from Ø 48 mm to Ø 800 mm.



## INTERNAL THREADING

SC1 | SC2 | SC3

The kit has been designed to give great versatility of use to the portable boring machines of the Supercombinata series, by allowing to perform internal threading from Ø 120 mm to Ø 350 mm.



## EXTERNAL TURNING

BASIC | EASY | EASY COMPACT  
SC1 | SC2 | SC2 COMPACT | SC3

The kit has been designed to give great versatility of use to the portable boring machines of the Supercombinata series, allowing to perform cylindrical turning and overlay welding from Ø 60 to 300 mm.





Elsa Srl  
Località La Petrizia - SS 106  
88050 Sellia Marina (CZ) - Italia  
Tel: (+39) 0961 962854  
Fax: (+39) 0961 968716  
info@elsasrl.com

[www.elsasrl.com](http://www.elsasrl.com)